

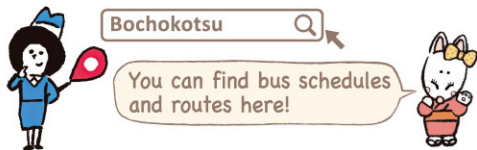
Contact us about bus service



【Bochokotsu】

- Yamaguchi Branch : Tel : 083-922-2555
- Saikyobashi Bridge Branch : Tel : 080-2882-8203
- Hours / 11:00 ~ 13:00 / 14:00 ~ 18:00
- Closed : New Year Holidays (12/29 ~ 01/03)

<https://www.bochobus.co.jp>



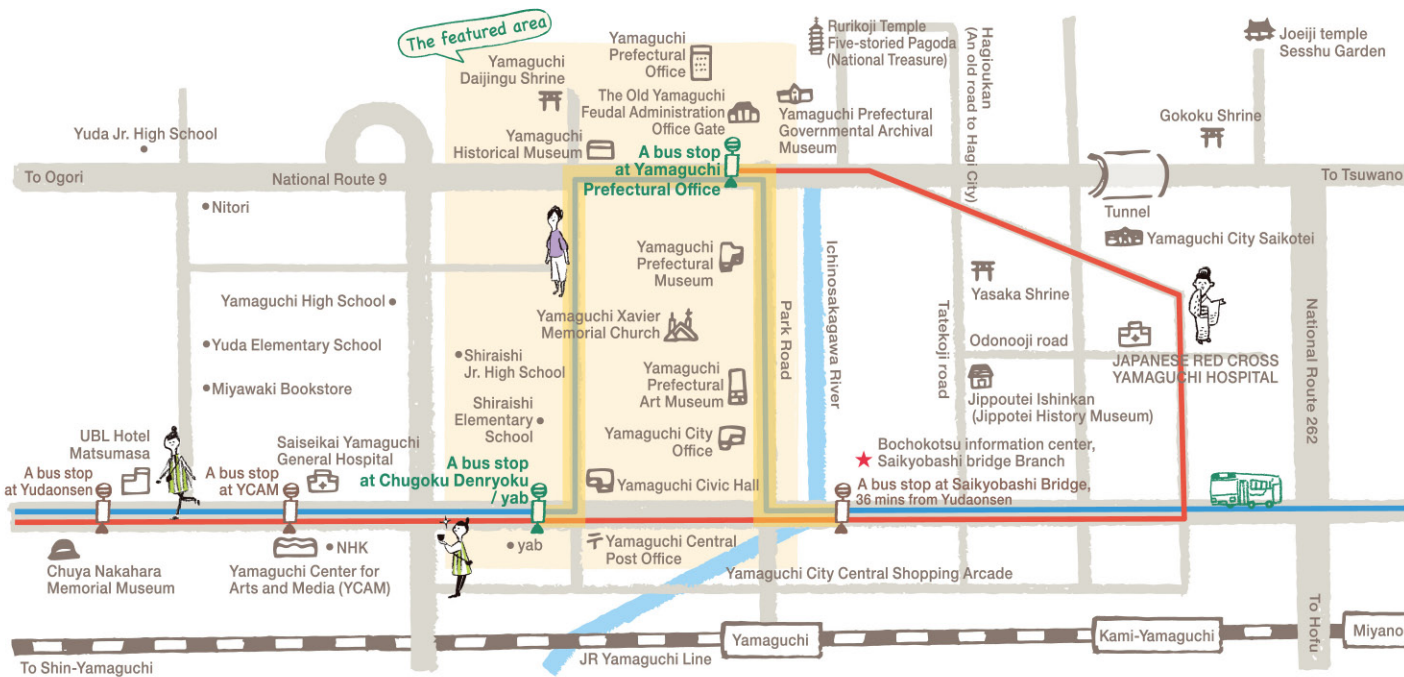
Publisher / Yudamori

[Contact] 083-922-0344 (Yudaonsen Hot Spring Distribution Cooperative Association)

5-2-20 Yudaonsen, Yamaguchi City, Yamaguchi Prefecture, 753-0056, Japan

Website of Yudaonsen Hotel Cooperative Association : www.yudaonsen.com

*All of the listed information is issued on February 26, 2019.



— Yudaonsen ~ JAPANESE RED CROSS YAMAGUCHI HOSPITAL ~ Yamaguchi Prefectural Office (The last stop) [110 / 111 / 112 / 113 / 114 / 310 / 311 / 411]
 All bus services are bound for Yamaguchi Prefectural Office via Saikyobashi Bridge
 — Yudaonsen ~ Yamaguchi Prefectural Office ~ Miyano [132 / 134 / 136 / 138]

*These are major bus routes and the numbers in [brackets] indicate final destinations.

You know this?
Things to know!?

Yamaguchi travel tips

Here are some travel tips to make your experience more exciting and fun if you know this ahead of your walk from Chugoku Denryoku / yab bus stop to Yamaguchi Prefectural Government Office bus stop☆

**Connection through friendship?
Yoshitaka Ouchi and Xavier, a missionary**

Yoshitaka Ouchi, the 31st generation of the Ouchi clan who built a foundation of Yamaguchi, gave Francisco Xavier, a Spanish missionary, permission for the missionary activity in Japan for the first time. Now, Yamaguchi City has become a sister city with Pamplona in Spain, the birthplace of Xavier.



The Ouchi Culture throughout the city

The Ouchi culture in the city was first established by Hiroyo Ouchi, the 24th generation of the Ouchi clan, who was impressed by the sophisticated culture and an atmosphere in Kyoto. Remnants of the Ouchi culture still remains throughout the city.



- National Treasure Rurikoji Temple Five-Storeyed Pagoda**
It is registered as the Masterpiece of the Ouchi culture to the National Treasures in Japan.
- Yamaguchi Tanabata Lantern Festival**
It is a festival celebrated by local residents who followed a Bon lantern custom by the Ouchi clan to honor the spirits of their ancestors.
- The Yamaguchi Gion Festival "Saginomai Shinto Ritual"**
It is a long lasting and representational festival in Yamaguchi that takes place at Yasaka Shrine, where Hiroyo Ouchi brought a ceremonial transfer of a deity from Kyoto.
- The Ouchi Lacquerware**
It is a representational traditional craft in Yamaguchi. It features elegant pictorial patterns with remnants of the Ouchi culture.

Important architecture throughout the city

Yamaguchi City has a variety of important architecture, ranging from ones with historical values to stylish ones with modern technology and designs throughout the city. If you are a type of person who doesn't get satisfied with ordinary tourist spots, why don't you take a walk to search for some of wonderful architecture here!



Becoming a Christmas City in December!

Yamaguchi City is the first city in Japan that celebrated Christmas. That means Yamaguchi City is the place of origin for the Japan's Christmas! Every year, Yamaguchi City becomes Christmas City in December and holds nearly 50 different events and workshops☆



Let's walk between bus stops!

Yamaguchi City Walking Map



How to use this map

Here is information about a recommended sightseeing tour focusing on a specific bus route in Yamaguchi City
 This is a sightseeing tour for those who travel by the inner city Bochokotsu bus service from "Chugoku Denryoku / yab" to "Yamaguchi Prefectural Government Office".
 Enjoy a 2 hour-long walk through the area.

[Navigator] Map-chan



[Yudaonsen Mascot Character] Yuko-chan



1 Yamaguchi Xavier Memorial Church

A church built to commemorate St. Francis Xavier 400 years after his first visit to Yamaguchi. The current building was reconstructed in 1998.

☎ 083-920-1549

🏠 4-1 Kameyama cho, Yamaguchi City ⌚ 9:00 ~ 17:00

🚪 **Closed** None (but may occasionally close due to some events, etc.)



Flavors revived from the end of Edo period "Bakumatsu Ishin Pan, or Bread from the end of Edo period for Meiji Restoration"

Reproduction of dairy-free bread that was manufactured in Yamaguchi 150 years ago. It is characterized by scent similar to Japanese sake, or rice liquor, steamed bun. Also, check out "Choshu Kihetai, or Volunteer militia, Hard Biscuit!"



[XAVIER CAMPANA]

☎ 083-923-6222 🏠 5-2 Kameyama cho, Yamaguchi City ⌚ 9:00 ~ 18:00 🚪 **Closed** Restaurant closes on Wednesdays

2 Yamaguchi Prefectural Art Museum

You can enjoy and appreciate artworks in thematic exhibitions from its collection and in a variety of special exhibitions.

Check out the museum shop!



☎ 083-925-7788

🏠 3-1 Kameyama cho, Yamaguchi City

⌚ 9:00 ~ 17:00 *The last admission is before 16:30.

🚪 **Closed** Mondays (If Monday is a holiday, it opens), New Year Holidays, occasionally closes for exhibition change.

🎫 Collection : Adult 300 yen, Student 200 yen, Over 70 years old and under 18 years old Free *Group discount available, Fee varies depending on special exhibitions

For a break

A recommended item is the chocolate tart.

7 ÉPICERIE TORY

A store which specializes in quiches and tarts. They offer a "galette" crepe, made of Soba, or buckwheat, in the café space. There is also a variety of baked goods perfect for souvenirs or gifts!

☎ 083-941-5820 🏠 1F 3-2-32 Chuo, Yamaguchi City

⌚ 11:00 ~ 18:00

🚪 **Closed** Wednesdays and the 1st and 3rd Thursdays *Closes occasionally

3 Kameyama Park Summit Plaza

Reopened after renovation in September 2018. Enjoy the Takachika Mori bronze statue and other monuments, as well as a beautiful panoramic view!



☎ 083-933-0090

(Yamaguchi Tourist Information Center)

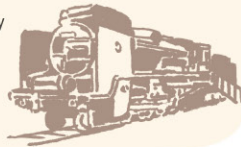
🏠 Kameyama cho, Yamaguchi City



Take a look at a display of a retired steam locomotive (SL)!

Japan National Railway Class D60 1 made in 1927.

It was in operation on the Tokaido line and Sanyo line until 1966.



Take a close look at the actual display of a retired SL

4 Yamaguchi Museum

A general museum with displays from fields of astrology, geology, archeology and science & engineering. A fun place for both kids and adults!

☎ 083-922-0294 🏠 8-2 Kasuga cho, Yamaguchi City

⌚ 9:00 ~ 16:30 *The last admission is 30 minutes before closing.

🚪 **Closed** Mondays (If Monday is a holiday, it opens but closes on the next day), New Year Holidays, Temporary closure for cleaning, etc. may take place.

🎫 Adult 150 yen, Student 100 yen, Under 19 years old and over 70 years old Free *Group discount available, Extra fee for special exhibitions



6 Yamaguchi Prefectural Governmental Archival Museum (Yamaguchi Prefectural Former Prefectural Building / Yamaguchi Prefectural Former Parliament Building)

Rare and important buildings with Western modern architectural style and traditional Japanese style fused together, exhibiting high quality architectural techniques of the Taisho period. It is a nationally designated important cultural property.

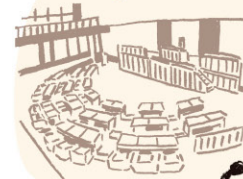


☎ 083-933-2268

🏠 1-1 Taki machi, Yamaguchi City ⌚ 9:00 ~ 16:30 🎫 Free to visit

🚪 **Closed** Mondays, Holidays except Children's day and Culture day, New Year Holidays

An eye-opening attractive photo spot!



Romantic atmosphere of the Taisho period "the Yume Koryu Hall, or Dream Social Hall"

It is a hall in Yamaguchi Prefectural Former Parliament Building and was in use until 1974. Currently it is used as the Yume Koryu Hall, or Dream Social Hall and for events.

☎ 083-933-2268 🏠 1-1 Taki machi, Yamaguchi City

⌚ 9:00 ~ 16:30 🎫 Free to visit

🚪 **Closed** Mondays, Holidays except Children's day and Culture day, New Year Holidays

5 Yamaguchi Daijingu Shrine

Yamaguchi Daijingu Shrine is described as the Ise Shrines of the West and will have its 500th anniversary in 2020 after a ceremonial transfer of deities from Ise Jingu Shrines to an inner and an outer shrine here in Yamaguchi.

A popular spot for travel and fortune in Yamaguchi



☎ 083-922-0718

🏠 4-4 Taki machi, Yamaguchi City ⌚ Open all day

Try to take a good picture!



A Rock Map Yamaguchi

A large map of Yamaguchi made on a ground which you can find on a path behind Yamaguchi Museum on the way up to Mount Kasuga!

☎ 083-922-1070 (Yamaguchi Prefecture Hofu Civil Engineering and Construction Office)

🏠 Kasuga cho, Yamaguchi City ⌚ Open all day



For a break

8 Kurumi

A well-established café with more than 50 years of business. Their special menu item is a beef stew with condensed flavor of ingredients featured with simmering beef meat and the mild rich taste.

☎ 083-922-5862 🏠 1-2 Ote machi, Yamaguchi City

⌚ 9:00 ~ 15:00 🚪 **Closed** Mondays

